



暉誠國際驗證股份有限公司公司介紹.

Agenda

- Who we are.
- ATC story
- What we do
- Our Accreditation
- Our Client

Who we are.

- A **Professional** lab that **satisfied** clients' **safety requirement**.
- A company that is good at **worldwide certification**.
- The **Solution** partner who can serve all you need.
- We are always to **be Ahead for you**.
- We are **Excellence** in all our service through our team dedication.
- The most **Reliable** partner for you.

ATC Story

History & Oversea branch.

2004 Oct.
ATC
Established.

2005

- Recognized lab by UL, Intertek, TUV etc ,

2006 

- Establish Singapore Branch.
Cotek Singapore.

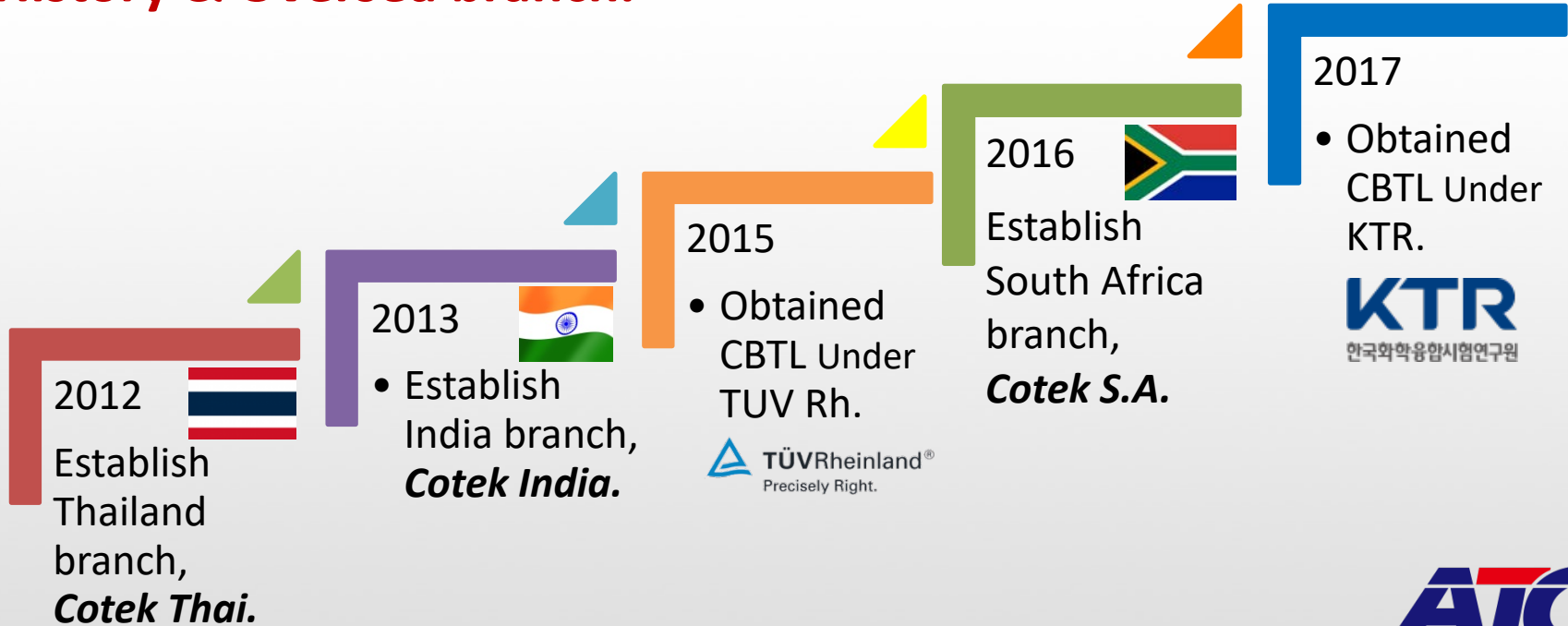
2009 

ATC Mexico Laboratory
ATC Mexico, S.A. de C.V
Established.
Accredited by TAF & BSMI.



ATC Story

History & Oversea branch.



ATC Story

Future and Vision



2018
Established
Reliability Laboratory.

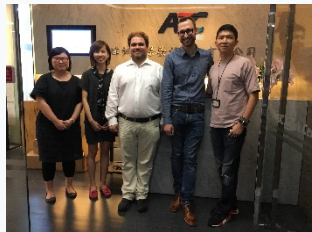
2019

Established
Automotive & ESS
Battery Laboratory.



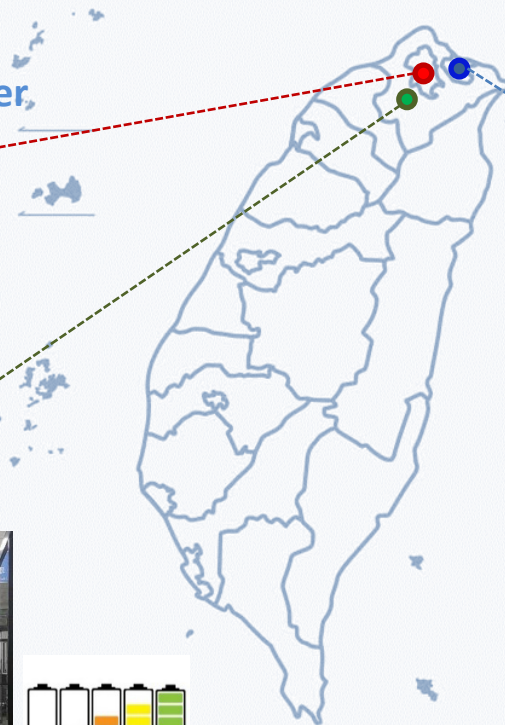


#2 Nei-Hu Headquarter



#3 Sangchong Lab.

For LEV Battery, Charger and Household Appliance



#5 Keelung Lab.



For Automotive EV Battery and Big size Reliability Test





Mexico



South Africa



Malaysia



Korea



Japan



Brazil



India



Beijing



Taiwan



Indonesia



Argentina



Thailand



Vietnam



Singapore



Australia

What we do



Global Market Access



Specified Electrical Appliances and Materials



Other Electrical Appliances and Materials



Our Accreditation




財團法人全國認證基金會
Taiwan Accreditation Foundation

Certificate No. : L2067-181115

Certificate of Accreditation

This is to certify that

AnTek Certification Inc.
AnTek Certification Inc.
7F, No.351, Yangguang St., Neihu District, Taipei City 114, Taiwan

is accredited in respect of laboratory

Accreditation Criteria : ISO/IEC 17025:2005
Accreditation Number : 2067
Originally Accredited : October 20, 2009
Effective Period : October 22, 2018 to October 21, 2021
Accredited Scope : Testing Field, see described in the Appendix
Specific Accreditation Program : Accreditation Program for Designated Testing Laboratory for Commodities Inspection


Chung-Lin Wang
President, Taiwan Accreditation Foundation
Date : November 15, 2018

PI, total 6 pages

The Appendix forms an integral part of this Certificate, which shall be invalid when used without the Appendix



Certificate of Acceptance

To participate
in the IECEE CB Scheme – IEC System of Conformity Assessment Schemes for Electrotechnical Equipment and Components (IECEE)

AnTek Certification Inc.
7F, N. 351, Yangguang St., Taipei City 114, Chinese Taipei

has been assessed and determined to fully comply with the requirements of ISO/IEC 17025: 2005-05, The Basic Rules, IECEE 01: 2016-10 and Rules of Procedure IECEE 02: 2017-06, and the relevant IECEE CB-Scheme Operational Documents.

AnTek Certification Inc.

is therefore entitled to operate as a CB Testing Laboratory (CBTL) under the responsibility of Korea Testing & Research Institute (KTR) as National Certification Body (NCB) and to carry out testing within the IECEE CB Scheme for the Scope (Product Category(ies) and Standard(s)) as listed in the relevant part of the IECEE Web Site at www.iecee.org, and is subject to all other terms as set forth in the IECEE Basic Rules and Rules of Procedure

The IECEE membership status of this CBTL can be verified on the aforementioned site.


Kerry McManama
IECEE Executive Secretary

Date of Issue: 2017-08-10
TL524



Certificate of Acceptance

To participate
in the IECEE CB Scheme – IEC System of Conformity Assessment Schemes for Electrotechnical Equipment and Components (IECEE)

AnTek Certification Inc.
7F, N. 351
Yangguang St.
Taipei City 114
Chinese Taipei

has been assessed and determined to fully comply with the requirements of ISO/IEC 17025: 2005-05, The Basic Rules, IEC CA 01:2016-07 & IECEE 01-S:2017-02 and Rules of Procedure IECEE 02: 2018-06, and the relevant IECEE CB-Scheme Operational Documents.

AnTek Certification Inc.

is therefore entitled to operate as a CB Testing Laboratory (CBTL) under the responsibility of TÜV Rheinland Japan Ltd. as National Certification Body (NCB) and to carry out testing within the IECEE CB Scheme for the Scope (Product Category(ies) and Standard(s)) as listed in the relevant part of the IECEE Web Site at www.iecee.org, and is subject to all other terms as set forth in the IECEE Basic Rules and Rules of Procedure

The IECEE membership status of this CBTL can be verified on the aforementioned site.


Kerry McManama
IECEE Executive Secretary

Date of Issue: 2019-02-28
TL530

Our Client



Getac

Qisda

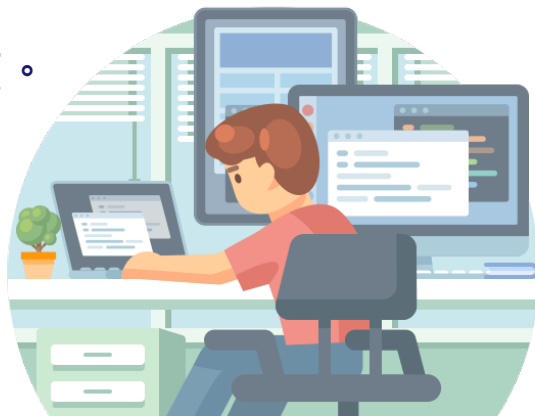


A composite image featuring a business handshake in the upper half and a woman's hands writing on a document in the lower right. The handshake is between two men in dark suits, one wearing a watch. The woman has dark nail polish and is holding a gold pen. The background is a bright, blurred office setting.

Join Us
職務內容介紹

☑ 專案工程師

- 執行電子、電器、電池產品安規測試與審核。
- 協助電子類產品的安規報告撰寫與驗證申請。
- 國內外標準研讀與學習。
- 積極主動、具溝通、文件管制能力。
- 案件管理、並定時回報客戶案件進度。
- 協助完成主管交辦事項。



☑ 業務專員/助理

- 業務開發與產品銷售。
- 維護良好客戶關係，並協助客戶案件管理。
- 行銷專案規劃、執行與管理，並達到公司賦予的業績目標。
- 跨部門案件協調與溝通。
- 具企圖心、積極向上。
- 需出差(國內外不定，看客戶屬性)



☑ 國際認證專員

- 負責國際認證的申請與溝通。
- 協助客戶取得全球的安全認證。
- 維護良好客戶關係，並協助客戶案件管理。
- 跨部門案件協調與溝通。
- 具企圖心、積極向上。
- 需出差(國內外不定，看客戶屬性)



A composite image featuring a business handshake in the upper half and a woman's hands writing on a document in the lower right. The handshake is between two men in dark suits, one wearing a watch. The woman has dark nail polish and is using a gold pen. The background is a bright, blurred office setting.

Join Us
公司福利介紹

★ 各項福利

- 勞保、健保、團保、特休、婚假
- 三節獎金(端午、中秋、年終)。
- 慶生會、生日禮券、每月一張電影票、尾牙、客戶年會、員工旅遊。
- 結婚補助、生育補助、喪葬補助。



Further Information

 +886 2 8752 3779

 hr@atclab.com.tw

 <http://www.atclab.com.tw/>

